

## EliteVue

### Fibre Optic Macro Otoscope

The EliteVue otoscope is setting the standards.

The EliteVue offers twice the field of view and 66% greater magnification compared to standard otoscopes\*.

The EliteVue offers a significantly improved view of the auditory canal and tympanic membrane, enabling more efficient diagnosis and enhanced patient outcomes. Suitable for throat illumination.

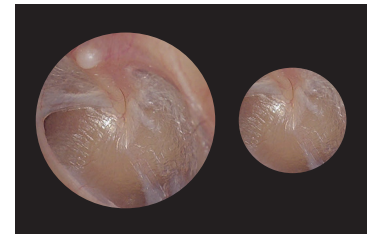
- › High-performance LED illumination (4,000 Kelvin, CRI = 92)
- › More than 5-fold magnification
- › Twice the field of view
- › Complete view of the tympanic membrane
- › Reflection-optimized high performance glass optics
- › Wheel to adjust focal depth
- › Easy to operate SpecEjec specula ejection device at the rear side of the otoscope to avoid contamination
- › Suitable for pneumatic otoscopy (supplied without ball)
- › A wide range of power supply options: as part of a diagnostic station, battery operated or with a rechargeable handle.

EliteVue is compatible with ri-scope® L handles and power sources as well as the ri-former wall diagnostic station.

#### Technical Data\*

	EliteVue	ri-scope® L
Field of view, Ø	11 mm (0.59 in)	5.5 mm (0.59 in)
Magnification	5x	3x

\* at a distance of 15 mm (0.59 in) between landmark and distal tip of the specula.



No. 10510	EliteVue head, LED 2.5 V
No. 10511	EliteVue head, XL 2.5 V
No. 10512	EliteVue head, LED 3.5 V
No. 10512-301	EliteVue head, LED 3.5 V with anti-theft security
No. 10513	EliteVue head, XL 3.5 V
No. 10513-301	EliteVue head, XL 3.5 V with anti-theft security
No. 2200-204	EliteVue otoscope set, LED 2.5V with C-handle for 2 alkaline batteries
No. 2200-202	EliteVue otoscope set, XL 2.5V with C-handle for 2 alkaline batteries
No. 2200-203	EliteVue otoscope set, LED, 3.5V with C-handle for 1 rechargeable Li-ion battery
No. 2200-201	EliteVue otoscope set, XL 3.5V with C-handle for 1 rechargeable Li-ion battery
No. 2210-204	EliteVue oto-/ophthalmoscope L2 set, LED 2.5V with C-handle for 2 alkaline batteries
No. 2210-202	EliteVue oto-/ophthalmoscope L2 set, XL 2.5V with C-handle for 2 alkaline batteries
No. 2210-203	EliteVue oto-/ophthalmoscopeset, LED 3.5V with C-handle for 1 rechargeable Li-ion battery
No. 2210-201	EliteVue oto-/ophthalmoscope set, XL 3.5V with C-handle for 1 rechargeable Li-ion battery
No. 2211-203	EliteVue otoscope set, LED 3.5V with C-handle for 1 rechargeable Li-ion battery, plug-in charger
No. 2212-203	EliteVue oto-/ophthalmoscope set, LED 3.5V with 2 C-handles for 2 rechargeable Li-ion batteries and desk charger

Please visit [riester.de](http://riester.de) for more information